

A low-angle, close-up photograph of a white wind turbine against a clear blue sky. The image is partially overlaid with abstract geometric shapes: a large yellow shape in the top left, a teal shape in the bottom right, and a white shape in the bottom left. The brand name 'elicio' is written in a white, lowercase, sans-serif font on the teal background.

elicio

BY nethys



The paper used in this brochure is FSC (Forest Stewardship Council) certified.
This certification attests to a series of principles and criteria of forest management recognized globally.
The objective of FSC certification is to promote responsible forest management.



elicio

ELICIO IS AN ENERGY PRODUCER ACTIVE IN THE RENEWABLE ENERGY SECTOR

The energy we produce originates mainly from wind. At the same time, Elicio has extensive know-how in the development, design, construction and commissioning of biomass power plants.

Each plant uses advanced technology and is realized in consultation with all local actors.

In this manner Elicio intends to contribute positively to a better living environment.

As a young company, Elicio focuses on projects that contribute to a more sustainable world, a more responsible society and on a long-term vision for its shareholders.

Elicio was founded in 2014 following the takeover of the company Electrawinds' "wind and solid biomass" activities.

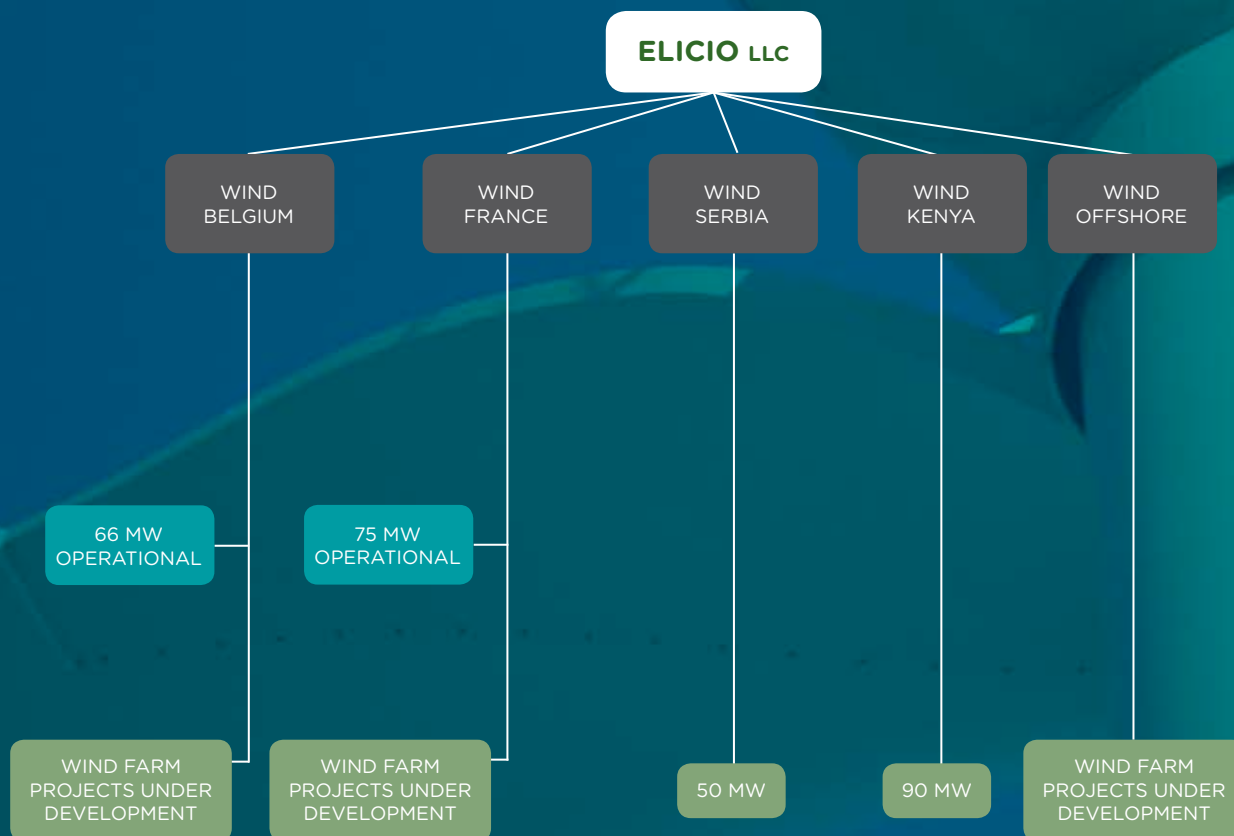
Elicio is a subsidiary of the Nethys industrial group.

Nethys' takeover and reorganisation plan through Elicio mainly comprises:

- the takeover of 31 special purpose companies with 142 megawatts (MW) of electricity generating capacity from operational wind farms in France and Belgium,
- a biomass project under construction in France,
- a series of projects under development including wind projects in Belgium, France, Serbia and Kenya,
- a portfolio of offshore wind projects in the North Sea, in Belgium.

Wind generation INDUSTRIAL EXPERTISE

Elicio continues its onshore and offshore wind farm development by mobilising its skills and know-how acquired in the field.



21 OPERATIONAL WIND FARMS IN BELGIUM AND FRANCE

BELGIUM: 12 operational wind farms with gross generating capacity of 66MW.

FRANCE: 9 operational wind farms with gross generating capacity of 76MW.

3 WIND FARMS UNDER DEVELOPMENT IN KENYA AND SERBIA

KENYA: 1 wind farm of 90MW

SERBIA: 2 wind farms with total generating capacity of 50MW.

A PORTFOLIO OF OFFSHORE WIND PROJECTS IN THE NORTH SEA, IN BELGIUM

- Operational and under construction
- Projects under development

CURRENT FARMS
GENERATE

234 000

MWh/year NET.

CONSIDERING THAT A HOUSEHOLD
CONSUMES 3.5 MWH/YEAR, ELICIO
SERVES THE EQUIVALENT OF

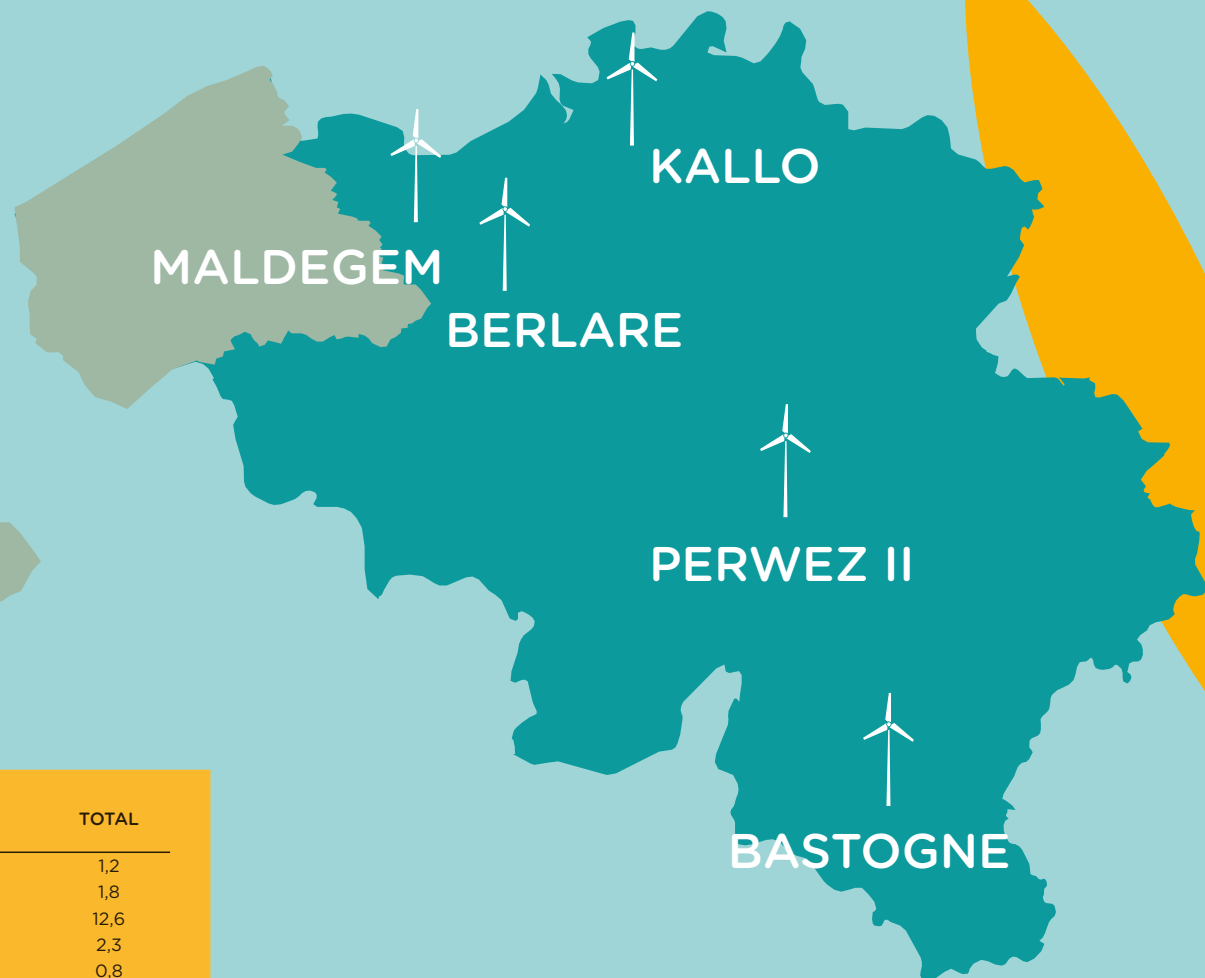
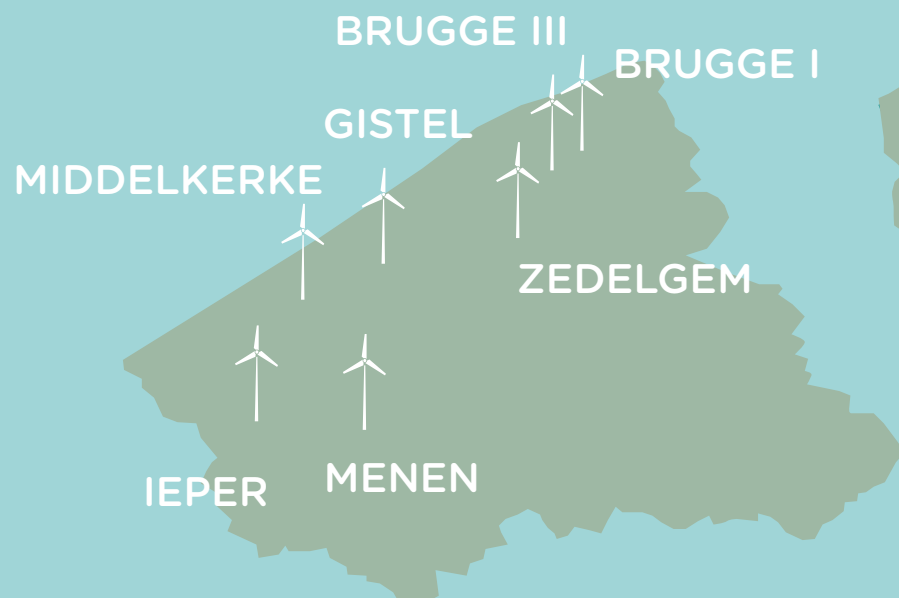
67 000

HOUSEHOLDS PER YEAR.

**FOR EACH OF ITS PROJECTS,
ELICIO MAINTAINS AN ACTIVE
PRESENCE AT EVERY STAGE:**

- project development
- engineering
- construction
- operation of projects for 20 years

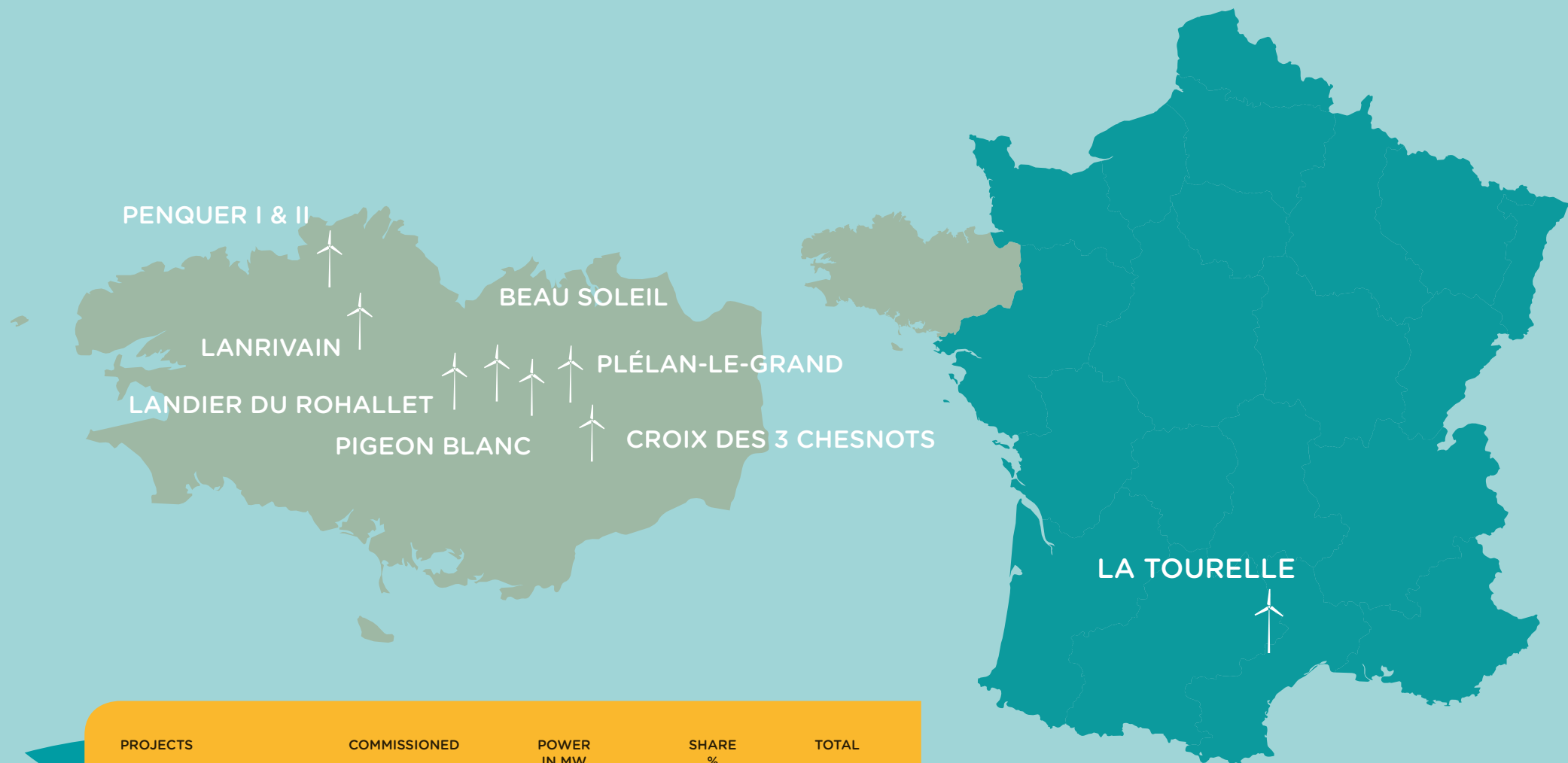




PROJECTS	COMMISSIONED	POWER IN MW	SHARE %	TOTAL
BRUGGE I	01/2001	1,2	100%	1,2
ZEDELGEM	09/2001	1,8	100%	1,8
BRUGGE III	05/2004	12,6	100%	12,6
GISTEL	05/2007	2,3	100%	2,3
MIDDELKERKE	05/2007	0,8	100%	0,8
BASTOGNE	02/2009	6,0	60%	3,6
IEPER	07/2009	4,6	100%	4,6
KALLO	01/2010	2,3	100%	2,3
MALDEGEM	12/2010	16,1	60%	9,66
BERLARE	12/2011	9,2	50%	4,6
PERWEZ II	02/2013	4	100%	4
MENEN	11/2013	4,6	50%	2,3
		65,5		49,76

Belgium

OPERATIONAL WIND FARMS
GROSS CAPACITY 65.5 MW (49.76 NET)



PROJECTS	COMMISSIONED	POWER IN MW	SHARE %	TOTAL
PLÉLAN-LE-GRAND	11/2008	12,0	65%	7,8
LA TOURELLE	08/2009	2,3	100%	2,3
LANRIVAIN	10/2009	8,0	100%	8,0
BEAU SOLEIL	05/2010	10,0	100%	10,0
CROIX DES 3 CHESNOTS	05/2010	8,0	93%	7,4
PENQUER II	10/2010	4,0	40%	1,6
PENQUER I	10/2010	12,0	100%	12,0
LANDIER DU ROHALLET	12/2010	8,0	100%	8,0
PIGEON BLANC	11/2010	12,0	70%	8,4
		76,3		65,54

France

OPERATIONAL WIND FARMS
GROSS CAPACITY 76.30 MW (65.54 NET)



ELICIO IS ACTIVE
INTERNATIONALLY
IN THE WIND ENERGY
SECTOR

PENQUER WIND FARM - FRANCE



BELGIUM
FRANCE
SERBIA
KENYA

BOTH IN BELGIUM
AND INTERNATIONALLY,
THE COMPANY IS DEVELOPING
A PORTFOLIO OF WIND ENERGY
PROJECTS WITH

1160 MW
TOTAL CAPACITY

Offshore Wind

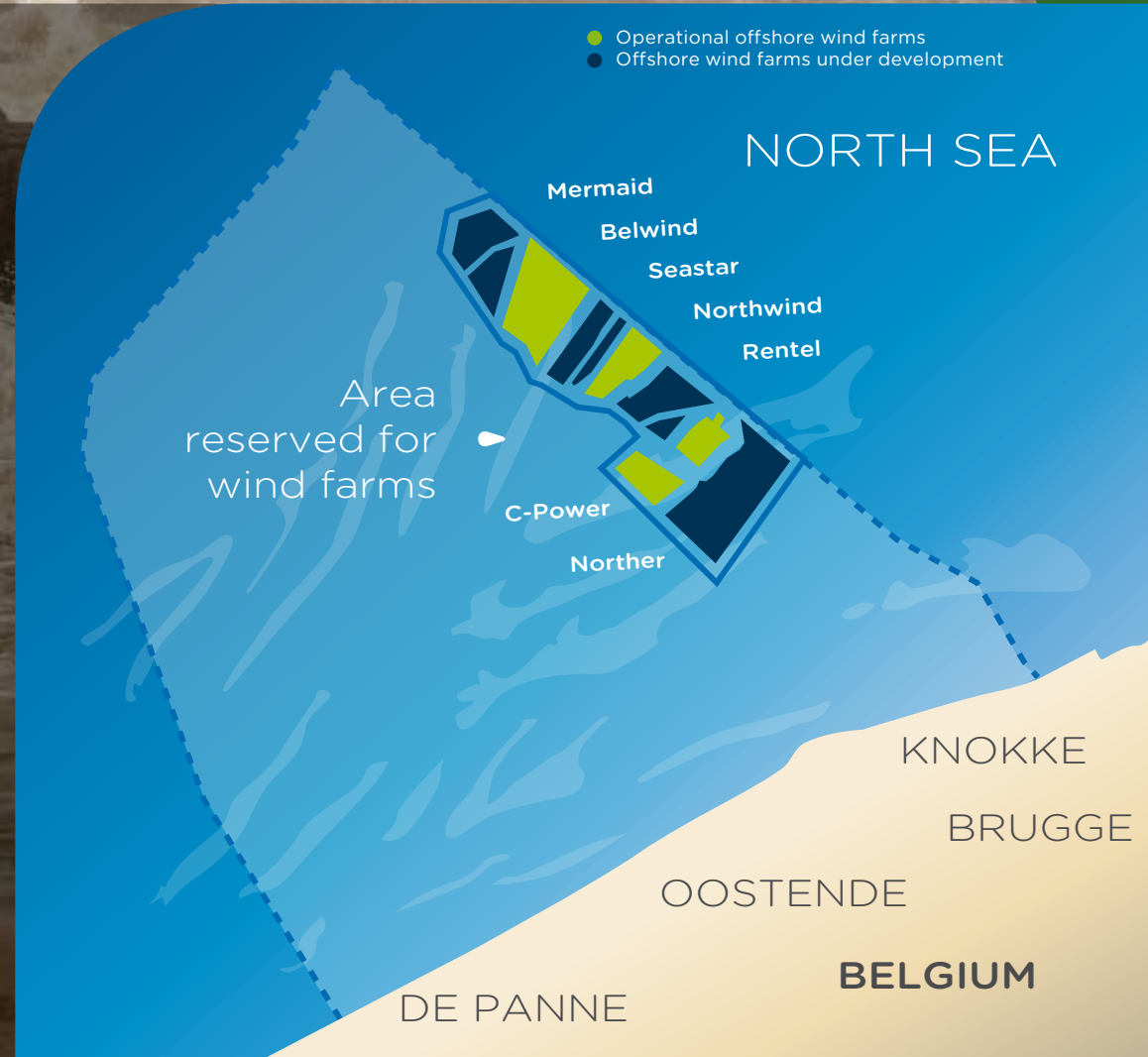
IN THE NORTH SEA

In Belgium, in recent years, concessions for offshore wind projects have been granted to various investors within several consortia.

Belwind, C-Power and Northwind are already operational.

Elicio, with its holdings in Norther, Rentel, Seastar and Mermaid, is one of the major players in terms of participation in North Sea offshore wind farms.

TODAY, ELICIO HAS A PORTFOLIO
OF APPROXIMATELY
238 MW
IN THE OFFSHORE MARKET.



Biomass

INDISPUTABLE KNOW-HOW

Elicio has extensive know-how in the development, design and implementation of biomass power plants.

Elicio has recently designed and commissioned a biomass power plant in France, in the department of Landes.

This is a cogeneration biomass plant with an electrical power output of 3.4 MW and valorising 8.17 MW of thermal energy.

Today, the plant consumes 40,000 to 45,000 tonnes of forestry site residues annually. Developed with the aim of using local resources, the plant's biomass supply is sourced from within a 50 km radius.

The plant will be fully operational in 2015 and will produce on average 28,000 MWh of electricity per year. It will thus be able to supply the equivalent of 8,000 households annually with electricity generated from a renewable energy source. All the heat is used on site for the manufacture of wood pellets.



BIOMASS PLANT
LABOUHÈYRE - FRANCE

**Elicio LLC**

John Cordierlaan, 9
8400 Oostende
Belgium
T. +32 59 56 97 00
F. +32 59 56 97 01
RPR Gent - 0552.775.977

info@elicio.be
www.elicio.be

Editor in charge:

Gil Simon, Secretary General
Member of NETHYS SA's Management Committee

Communication :

Isabelle Maudoux

Photo credits:

Imagellan
I-Stock photo
Elicio LLC

© 2015 - Elicio. All rights reserved.

